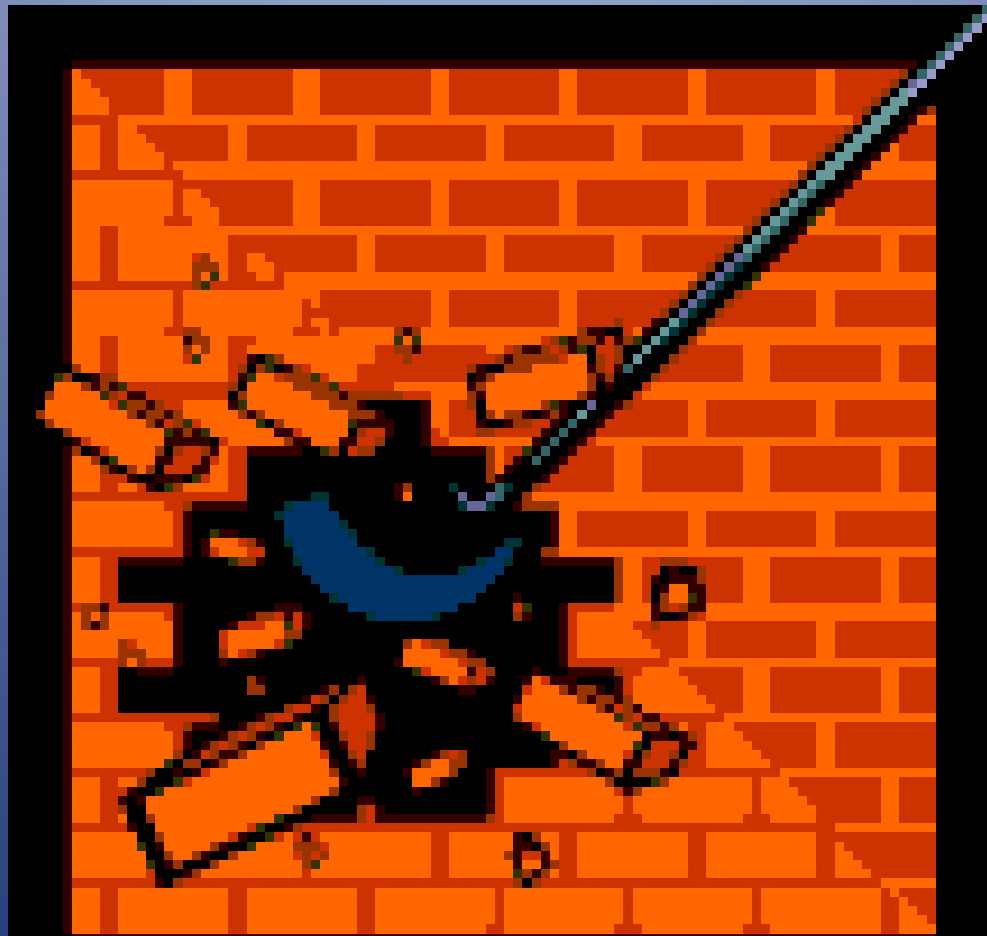


Demolition and Renovation Waste



Recurring Issues/Violations

- Demolition and renovation sites
- C & D areas of landfills



Air conditioners & all other equipment that contains refrigerants







Lead Roof Vent Flashing



Nickel-cadmium & lead-acid batteries







Mercury Containing Devices





Fluorescent Lamps









05/05/2010

Ballasts



MARK III ENERGY SAVER
CAT. NO. V-2S40-1-TP
FOR 2.40W 430 MA RS LAMPS OR 2-F40-4FT
34W OR 35W RS LAMPS 460 MA MAX

A **ADVANCE**
TRANSFORMER CO.
CHICAGO, ILLINOIS 60618

No. PCB's



 **MagneTek 438-L-TC-F**



7 68386 11165 8

USE WITH LAMP TYPE	LINE CURRENT (AMPS)
(2) F40T12	.66
(2) F40T12EC	.91
(2) F40T12CWY	.68
(2) F48T25W/UTSL	.68
(2) WORK'LITE	.68

UNIVERSAL™



Power Factor 87%
• See Table: Class A
• Starting Temp. 50°
60°F on ES Lamps.
• Designed For P
Use On

• Class
• No

ballast

02/03/2010

Hazardous Materials





OCT 15 2004

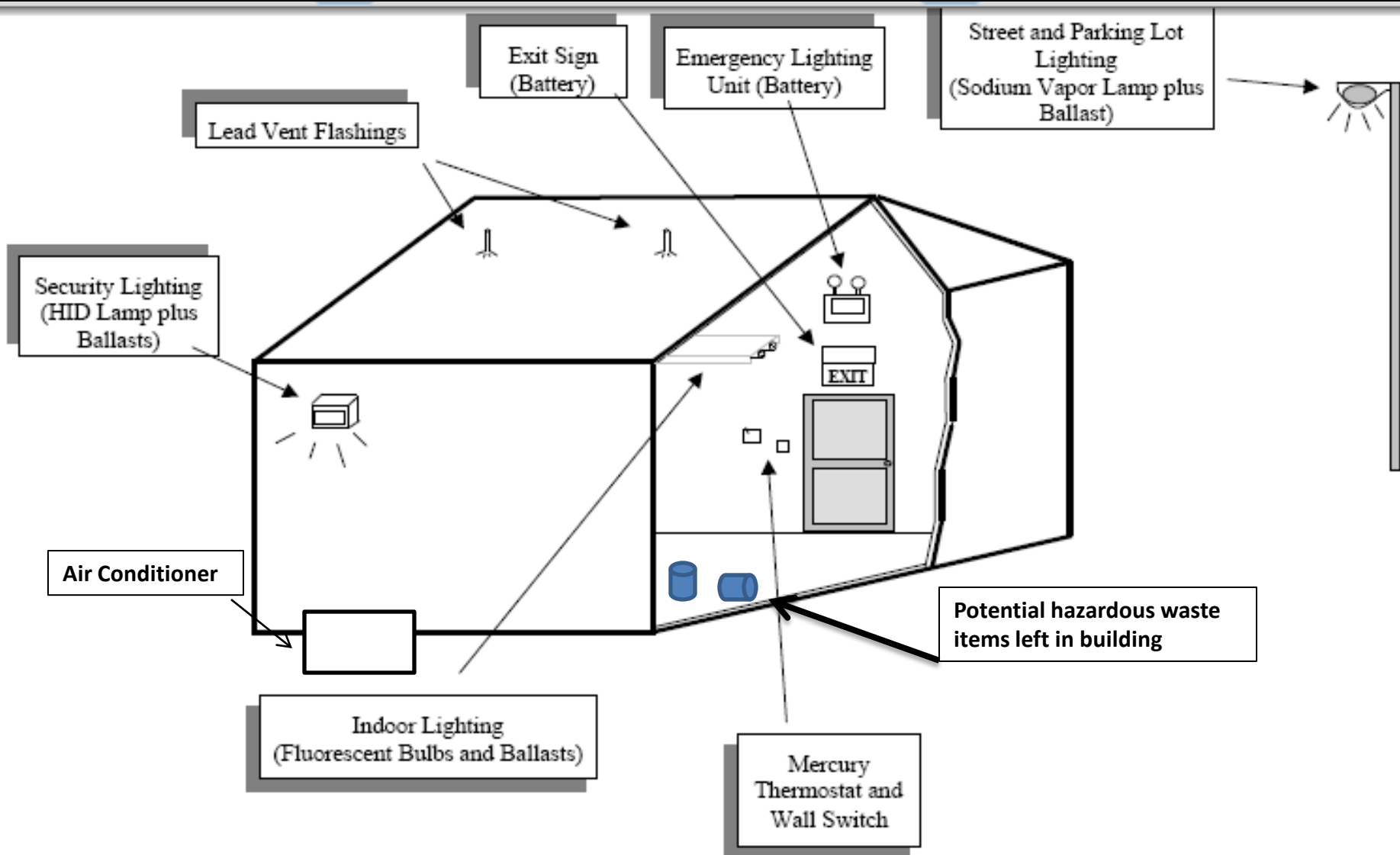












Sources of Hazardous Materials in Modern Buildings

Outreach Program

A checklist for you to do it right:

- ✓ Obtain necessary permits from the local building department
- ✓ Submit notice to the Department (10 working days in advance of any work)
- ✓ Conduct an asbestos survey
- ✓ Remove friable asbestos containing materials prior to any work (or potential friable)
- ✓ Have an accredited person on site during the removal of friable material
- ✓ Remove and store the following materials in a secure manner for off-site disposal or recycling: fluorescent and HID lamps, ballasts, mercury-containing devices, nickel-cadmium and/or lead-acid batteries, lead-containing components such as pipes and roof flashing, freon from air conditioning units, and hazardous materials/wastes
- ✓ Use water onsite to limit the dust particles in the air

Additional information available:

- *Recommended Management Practices for the Removal of Hazardous Materials from Buildings Prior to Demolition*
- *Managing Spent Fluorescent and High Intensity Discharge (HID) Lamps*
- *Managing Discarded Mercury-Containing Devices (MCDs) in Florida*
- *Contacts for Light Ballast Management*
- *Mercury-Containing Lamp and Device Registered Transporters and Storage Facilities*
- *Handbook for Small Quantity Generators of Hazardous Waste*

FACT SHEETS

- *Fluorescent Light Bulbs*
- *HID Lamps*
- *Mercury Thermostats*
- *Mercury Light Switches*
- *Lighting Ballasts*
- *Batteries*
- *Lead Roof Vent Flashing*



<http://www.dep.state.fl.us>

South District Office
PO BOX 2549
Fort Myers FL
33902-2549
941-332-6975

Management of Demolition and Renovation Waste

A Guide for Contractors



The demolition and renovation process has become more common with rapid growth and limited areas for new development. Inspectors for the Department of Environmental Protection (DEP) identified frequent violations of environmental rules associated with this process. These violations pose potential problems to the environment and personnel engaged in the demolition and renovation process. This brochure outlines important tips to help contractors protect themselves and the environment prior to violations occurring.



PRINTED ON RECYCLED PAPER



100